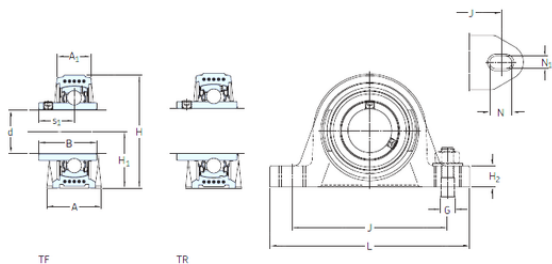




IOR Bearing Manufacturing Co.,Ltd



SKF SYK 20 TR bearing units

Bearing No. SYK 20 TR

Bore Diameter	20 mm
d	20 mm
s1	18,3 mm
A	32 mm
A1	21 mm
B	31 mm
G	10 mm
H	64 mm
H1	33,3 mm
H2	16 mm
J	96 mm
L	126 mm
N	17,5 mm
N1	12 mm
Weight	0,24 Kg
Basic dynamic load rating (C)	12,7 kN
Basic static load rating (C0)	6,55 kN
Fatigue load limit (Pu)	0,28
Category	Pillow Block Bearings
Inventory	0.0
Manufacturer Name	SKF
Minimum Buy Quantity	N/A
Weight / Kilogram	0.24
EAN	7316570979596
Product Group	M06110
Number of Mounting Holes	2

SYK 20 TR Bearing 2D drawings and 3D CAD models



IOR Bearing Manufacturing Co.,Ltd

Mounting Method	Set Screw
Housing Style	2 Bolt Pillow Block
Rolling Element	Ball Bearing
Housing Material	Composite
Expansion / Non-expansion	Non-expansion
Mounting Bolts	10 Millimeter
Relubricatable	Yes
Insert Part Number	YAR 204-2RF
Seals	Multi Function Seal
Housing Configuration	1 Piece Solid
Inch - Metric	Metric
Other Features	Single Row Y Bearing With Grub Screw
Long Description	2 Bolt Pillow Block; 20MM Bore; 33.3MM Base to Center Height; Set Screw Mount; Ball Bearing; Relubricatable; Composite; Multi Function Seal; Non-expansion
Category	Pillow Block
UNSPSC	31171511
Harmonized Tariff Code	8483.20.40.40
Noun	Bearing
Keyword String	Pillow Block
Manufacturer URL	http://www.skf.com
Manufacturer Item Number	SYK 20 TR
Weight / LBS	0.529
Nominal Bolt Center to Center	3.8 Inch 97 Millimeter
Bolt Spacing Minimum	0 Inch 0Millimeter
Base to Center Height	1.311 Inch 33.3 Millimeter
Length Thru Bore	1.22 Inch 31 Millimeter
Actual Bolt Center to Center	3.8 Inch 96Millimeter



IOR Bearing Manufacturing Co.,Ltd

Bore	0.787 Inch 20 Millimeter
Bolt Spacing Maximum	0 Inch 0Millimeter
Housing material	Composite
A ₁	21 mm
A ₅	18.5 mm
B ₄	4.5 mm
H ₁	33.3 mm
H ₂	16 mm
J max.	101 mm
J min.	91 mm
N ₁	12.5 mm
s ₁	18.3 mm
Basic dynamic load rating C	12.7 kN
Basic static load rating C ₀	6.55 kN
Fatigue load limit P _u	0.28 kN
Limiting speed	5000 r/min
Mass bearing unit	0.24 kg
Thread grub screw G ₂	M6x0.75
Hexagonal key size for grub screw N	3 mm
Recommended tightening torque for grub screw	4 N · m
Recommended diameter for attachment bolts, mm G	10 mm
Recommended diameter for attachment bolts, inch G	0.375 in